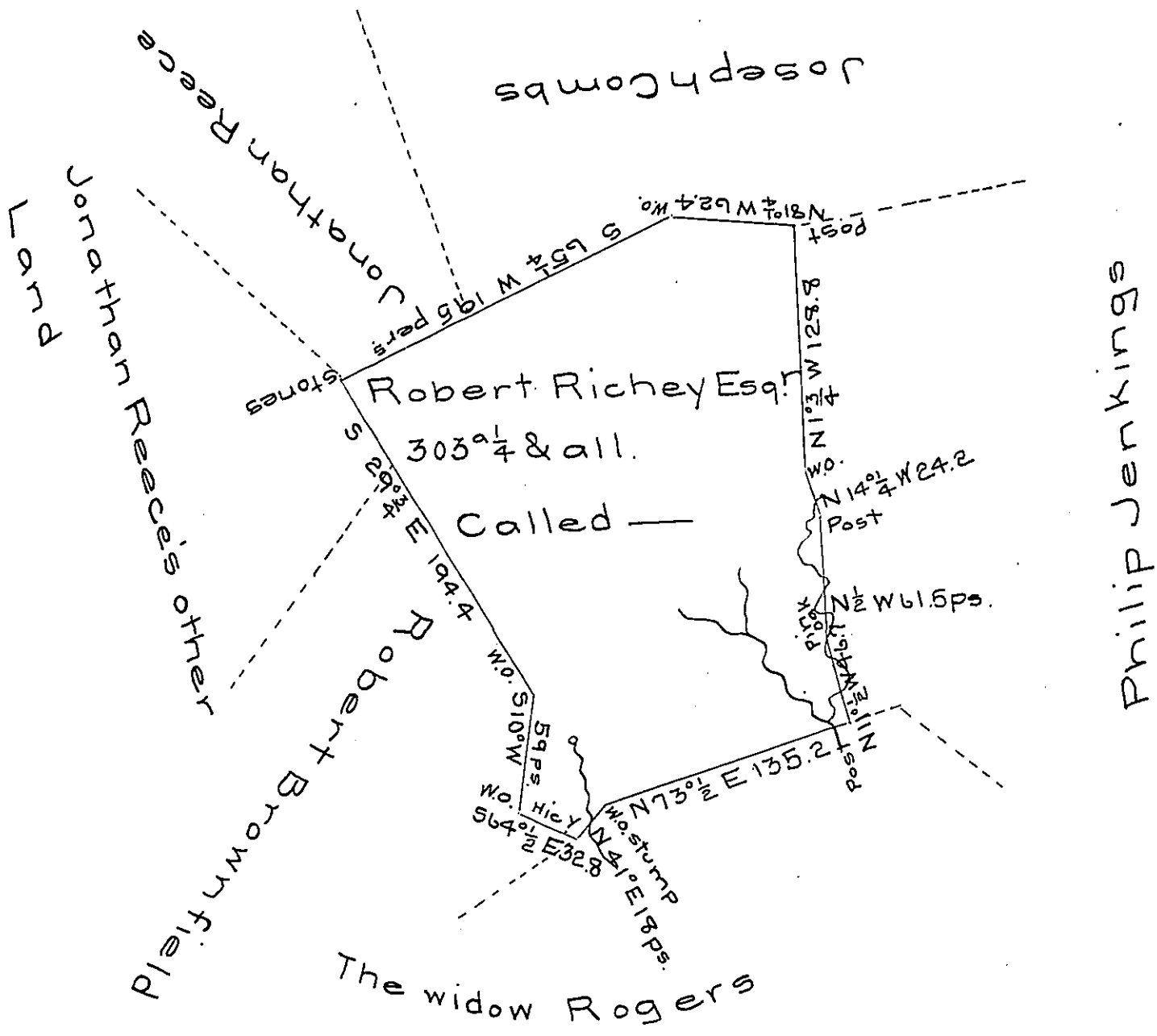


FORM No. 1.



Situated on a small draught of the middle branch of Georges Creek in George-township Fayette County and surveyed ~~the~~ the 6<sup>th</sup> day of August 1785 in pursuance of a warrant dated the 24<sup>th</sup> day of February 1785.

Dr. John Welss, for  
Alexander McClean  
Depty

To John Lukens Esq.  
Surveyor General

*IN TESTIMONY* that the above is a copy of the original remaining on file in the Department of Internal Affairs of Pennsylvania, made conformably to an Act of Assembly approved the 16th day of February, 1833, I have hereunto set my Hand and caused the Seal of said Department to be affixed at Harrisburg, this fourteenth day of September 1906.

*George D. Brown*  
Secretary of Internal Affairs.